



What's the Plan?

Community Development 2019 - 2024

Lucy Beattie & Tina Hartley

Community Engagement and Development Officers – March 2019

The Garve & District Development Company (SC565505)



Garve & District
Community
Council

Contents

	Page Number
WHO ARE WE?	1 - 3
FUNDING OPPORTUNITIES	4 - 9
WHAT'S THE PLAN ALL ABOUT?	10 - 12
HOW WAS THE PLAN CREATED?	13 - 21
WHAT DID WE FIND OUT?	22 - 28
WHAT NEXT?	29 - 40





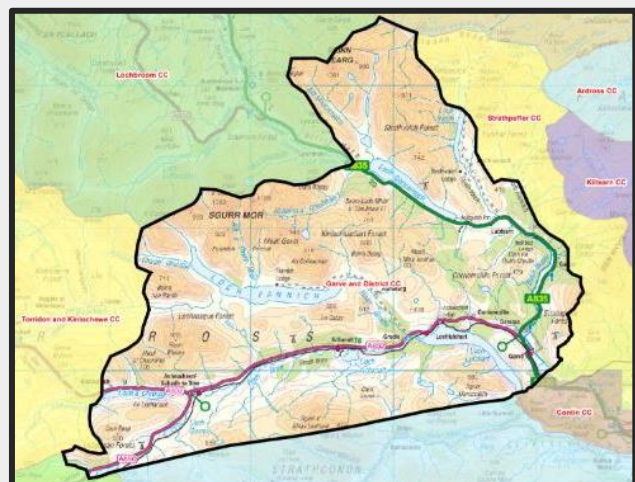
Who are we?

We are The Garve & District Development Company (TGDDC)

During 2016, The Garve and District Community Council (GDCC) commissioned Aigas Associates to undertake a community survey. 294 surveys were distributed and 124 returned i.e. 42.2% return rate. 73 (59%) answered yes to the question *"I think Garve and District should develop its own community trust"*. The Garve & District Development Company was therefore set up and incorporated on 9 May 2017 as a company limited by guarantee without share capital.

We are pleased to say that 8 volunteer Board Directors are currently appointed within the Company and the roles of part-time Company Secretary and Community Engagement and Development Officer now support the Company's Board.

Our community is represented by the Garve and District Community Council boundary and covers a large rural area of 611 sq km. We have a small population that we believe to be in the region of 298 residents.



At the end of February 2019, TGDDC had successfully applied for £65,491. £55,493 has been received from Lochluichart Community Trust (LCT) and £9,998 from SCVO Digital Participation Fund. These funds have supported the following areas:-

- Staff and company operational costs - LCT
- Development of a Community Plan - LCT
- Phase 1 and 2 of the on-line community hub – garve.org - LCT
- Garve & District DigiHub Digital Participation Fund Project - SCVO
- Garve & District DigiHub: Meet and Eat - LCT
- Children’s activities - LCT
- Children’s Christmas Party - LCT

The company also successfully applied, in August 2018, to Resource Efficient Scotland to enable a Resource Efficient Assessment to be carried out for Garve Village Hall.

Throughout 2018/19, Directors and Staff have developed workstreams to support community growth and development which underpin the observations and findings of this Community Development Plan.

Company Vision, Mission and Objectives

Vision: Our vision is of a sustainable community where individuals lead the fulfilled lives they seek.

Mission: Our mission is to improve the social, cultural, economic and environmental well-being of individuals and businesses by identifying and meeting community needs in these areas.

Objectives: We will create enterprise and projects, care for the environment, and promote the use of local resources, working with and for the local community, involving individuals, groups and businesses.

Garve & District is a vibrant and exciting place to live and work

We join together as a community to achieve results and benefit everyone

Celebrating our local area, activities and successes

Funding Opportunities

Garve and District is in receipt of a considerable amount of community energy funds provided by renewable energy developments in the area. Community benefit funds are managed by Lochluichart Community Trust (LCT).



LCT was established in 2014 as a not for profit community company with Scottish Registered Charity status. Its remit is to administer the community benefit funds provided by Eneco, which is associated with the Lochluichart Wind Farm and also Green Highland Renewables (Ledgowan) Ltd for the Ledgowan Hydro Scheme now managed by Albion Capital Group LLP. The

funds from both providers are distributed to projects and initiatives within the Garve and District Community Council area, with particular emphasis on local regeneration and community development. It is recognised that a clear Community Development Plan is required by funders especially in relation to OSCR and the need to provide evidence for potential spend within the community.

The first grant funding was received by LCT on 5th September 2014. The total received to end of February 2019 was £946,034 (being funds from Green Highland Renewables - now Albion Capital - for the Hydro Scheme and funds from Eneco for the Lochluichart Windfarm). The total paid out in grants for the same period was £742,643.

05 Sep 2014	LZN Ltd Year one Funding 2014/2015	£34,822.50
05 Sep 2014	LZN Ltd Year one Funding 2014/2015	£90,000.00
17 Dec 2014	LZN Ltd - Add. Turbines 2014/2015	£46,750.00
15 Jan 2015	LZN Ltd - Add. Turbines 2014/2015	£500.00
30 Sep 2015	LZN Ltd Year 2 Funds 51MW Scheme	£128,567.17
15 Dec 2015	LZN Yr 2 - 18 MW (less Leo reb. 11 hses)	£48,235.00

23 Dec 2015	LZN Ltd 15/16; (correction)	£750.00
02 Sep 2016	Eneco 3rd Year Funding (Original 51MW + 18MW Extension)	£184,938.74
29 Sep 2017	Green Highland Renewables	£4,995.00
03 Oct 2017	Eneco 4th Year Funding	£190,486.90
08 Nov 2017	Eneco (LNZ) - Accidental Payment. Reduce future payment by this amount	£14,635.12
15 Sep 2018	Payment from Eneco	£196,201.51
28 Sep 2018	Green Highland Renewables	£5,152.41

LCT has received further confirmation from EDF Renewables that the development funds from the Corriemoillie Windfarm will be managed by the trust. A revised agreement has been received and it is hoped to complete negotiations in April 2019, enabling the two year payment of approximately £310,000 to be paid to LCT. Each year in December for the duration of the contract, an annual sum of approximately £155,000 will be paid to LCT.

TGDDC continually strive to attract other funds as new projects arise and were successful in their application to the SCVO Digital Participation Fund during 2018 and were awarded £9,998.

LCT Funds paid out as of end of February 2019

19 Nov 2014	Garve and District CC Grant (dinner for over 60's)	£1,000
19 Nov 2014	Puffin Hydrotherapy Pool Grant	£5,000
19 Nov 2014	Strathgarve Primary Parents Grant	£436
01 Dec 2014	Achnasheen & Strathviach G/Club Grant	£9,100
10 Dec 2014	Achnasheen & Strathviach G/Club Grant	£4,569
18 Dec 2014	Strathgarve Primary Parents Grant	£10,510
26 Jan 2015	Achnasheen & Strathviach G/Club Grant	£1,331
26 Feb 2015	Strathpeffer Golf Club Grant	£8,000
26 Feb 2015	Strathgarve Primary Parents Grant	£161
10 Aug 2015	APSE 2014 / 2015 Advance	£5,000
10 Jun 2015	Lochluichart SWI Grant	£990
22 Oct 2015	G&DCC Grant for Over 60's Party	£1,200
22 Oct 2015	Community Energy Scotland - pay 1/3	£8,658
30 Oct 2015	Dundonnell Mountain Rescue Donation	£5,000
30 Oct 2015	Strathgarve Parent Council: Donation	£1,500
30 Oct 2015	Stathpeffer Pavilion Donation	£5,000
23 Nov 2015	Friends of Lochluichart Advance	£40,000
16 Dec 2015	CES Payment 2 of 3	£8,658
18 Jan 2016	Wyvis Play Park - HC Planning & Advert	£501
18 Mar 2016	Friends of Lochluichart - Advance	£32,000

18 Mar 2016	Wyvis Playpark - Advance	£25,000
29 Mar 2016	CES Payment 3 of 3	£8,660
06 May 2016	Ullapool School - China Trip	£1,720
06 May 2016	Ullapool School - WWI Field Trip	£1,380
06 May 2016	GDCC - Community Needs Survey	£5,855
29 Nov 2016	Strathgarve Primary Parents Council	£1,812
29 Nov 2016	Dingwall Academy Rock Challenge Grant	£1,000
19 Jan 2017	GDCC for 5 defibrillators (Mtg 13 Jan 2017)	£13,020
08 May 2017	G and D Broadband (Satellite)	£22,500
19 May 2017	G and D CC - Development Co	£250
19 May 2017	Garve and District CC - August Ceilidh	£775
10 Jun 2017	Wyvis Play Park 25% on Equip. Order	£34,902
15 Aug 2017	Torridon Mountain Rescue Team	£5,000
31 Aug 2017	Strathgarve School Playpark	£25,535
17 Oct 2017	GDCE. Total of Home Energy Scheme (£7,400) + Local Energy Assessment (£8,436) + Rebate Scheme (£44,650)	£60,486
09 Nov 2017	Scotnet - Wireless Broadband Survey	£3,600
09 Nov 2017	G&D Development Company	£30,685
15 Nov 2017	Russell Leisure Ltd (Wyvis Play Park Equipment Delivery)	£32,438
17 Nov 2017	Achanalt Householders Association	£160
01 Dec 2017	Wireless B/B Survey (Cromarty)	£3,600

16 Jan 2018	Garve & District Broadband	£2,493
18 Jan 2018	Garve & District Broadband	£90,551
05 Feb 2018	Medical Practice Defibrillator Fund Grant	£500
05 Feb 2018	G&D Development Co - website	£5,000
05 Feb 2018	Strathpeffer & District Rowing Club	£500
23 Apr 2018	Wyvis Playpark Group - Final Balance	£66,170
01 May 2018	Garve & District Broadband	£5,000
02 May 2018	Mossford PWS Legal Fees	£5,130
02 May 2018	Garve and District CC - Ceilidh	£775
02 May 2018	Strathpeffer Primary School	£3,000
02 May 2018	Ullapool Highschool - Japan trip help	£500
02 May 2018	Highland Museum of Childhood	£1,000
21 May 2018	Strathpeffer Under Fives	£950
11 Jun 2018	GDBB Group for Self-dig Grant	£36,200
06 Aug 2018	GDBB - Part of original cashflow Self-dig	£10,000
23 Aug 2018	G&D Dev Co - Meet & Eat: G & D DigiHub	£11,383
23 Aug 2018	G&D Dev Co - Children's Holiday Activities	£1,995
09 Sep 2018	TGDDC - DigiHub replacement cheque 335	£11,383
27 Nov 2018	Strathgarve Primary School	£2,000

27 Nov 2018	Garve & District Energy group	£29,803
21 Dec 2018	Community Xmas party	£550
31 Dec 2018	Garve and District Broadband	£11,618
31 Jan 2019	GDB Phase 1	£30,200
31 Jan 2019	TGDDC Online Hub phase 2	£5,630
28 Feb 2019	Garve and District Broadband	£21,170
	TOTAL	£780,492

LCT Fund returned as at end of February 2019

04-Nov-16	From G&DCC - Unused Balance of Grant for Community needs survey	£1,969
22-May-17	Friends of Lochluichart - Unused Balance of Grant returned	£13,203
01-Sep-17	G&D Broadband (Satellite) - Unused Balance of Grant Returned	£18,030
11-Sep-17	G&DCC - Unused Balance of Grant Ceilidh	£20
20-Dec-17	Refund of Balance of Satellite Funds	£690
06-Jun-18	Refund of Contingencies GDCC for 5 defibrillators from Jan 2017	£276
21-Sep-18	GCDD Ceilidh	£6
11-Dec-18	Garve energy group	£2,531
Feb-18	Strathgarve Primary School parent council	£1,145
	TOTAL RETURNED	£37,869

What's the plan all about?

The Community Development Plan sets out the community's vision in the form of strategic themes for development within Garve and District over the next 5 years and fulfils the company's vision, mission statement and objectives. Our overall aim is to improve the social, cultural, economic and environmental well-being of individuals and businesses and our strategic themes and work programme for the future are based on this.

An extensive and continuous process of community consultation and engagement, carried out between 2016 and early 2019, has determined the strategy which guides this plan.

The plan will be used:-

- To prioritise the work of TGDDC.
- By LCT and will assist their Board when reviewing grant applications from TGDDC and community groups.
- To support and assist Garve and District Community Council to plan and prioritise their work. "The Development Plan will be another insight into the community's needs and wishes, a useful follow up to the 2016 Community Needs Survey." (GDCC 2019)
- To attract new Directors/Councillors to all three community organisation in the knowledge there is a clear, community agreed, plan in place.
- To support funding applications to other funders.

What's already happened?

2016 Community Survey

During 2016, Aigas Associates carried out a wide-ranging consultation including face to face sessions and a written community needs survey that was sent out to 283 residents and 11 High School pupils attending Dingwall Academy. The survey yielded a 42.2% response rate, the plan was developed at the community's request and community priorities and vision for the future were identified:-

Question	Agree strongly	Agree	Disagree	Disagree strongly	Prefer Not to Answer	Response Count
The trust should have a five to ten year action plan which the community helps to inform setting out priorities and how they will be delivered.	29	40	2	0	3	74

Priority	Ideas for Community activities/projects	Responses
1	Developing a Community Trust ACHIEVED	73
2	Improved broadband (reliable, fast affordable) ACHIEVED AND DUE TO COMPLETE 2019	70
3	New Community Hub/Hall – TENDER FOR RESEARCH ISSUED. ON-LINE COMMUNITY HUB ACHIEVED.	50
4	Reduced energy costs for households – ACHIEVED AND ON-GOING	42
5	A shop in Garve	40
6	Community care/care at home scheme for the elderly	30
7	Christmas party for the whole community (children and adults) ACHIEVED AND ON-GOING	26
7a	Develop abandoned petrol station in Achnasheen UNDER PRIVATE DEVELOPMENT	26
8	Improved children's play facilities in village ACHIEVED	22
9	Defibrillators at key points. ACHIEVED	21
9a	More community activities/clubs e.g. photography, painting, fishing. ACHIEVED AND ON-GOING	21
10	Improvement to existing village hall e.g. insulation, new windows. RESOURCE EFFICIENT SCOTLAND SURVEY IN PLACE	20
10a	Community transport scheme e.g. minibus	20
	Handy man service for the elderly A SERVICE DOES EXIST VIA THE HIGHLAND COUNCIL, POSSIBLE LOCAL SERVICE WITH LINK TO MENS SHED NEEDED	20
10b	Improve private water supplies LEGAL FEES SUPPORTED ON-GOING	18
11	Footpath network	18
12	Environmental Projects ACHIEVED AND ON-GOING	4

A broader community vision was stated as:

What do you think should be captured in that vision?	Response Count
A community that cares for its elderly residents	82 (86%)
A community which has a country feeling and isn't just a stopping off place for visitors to the West	58 (61%)
A community which celebrates its history	56 (59%)
A community which has a balanced demographic of young, working age and older residents	74 (77.9%)
A community which has invested in its future with legacy projects providing a sustainable future for generations to come	73 (76.9%)
A community which has vibrant social activities	64 (67.4%)
A community that makes the most of its landscape and environment	67 (70.5%)
A community where people have the opportunity to both live and work	78 (82.1%)
Other	22 (23.2%)

Twenty two respondents also offered other views a small number of which have been presented below:-

- *"A community which supports the school and does more with young and old together."*
- *"Garve and Achnasheen have very different needs."*
- *"A healthy community does not need to be utopia, but has to make life more affordable and attractive. More permanent jobs would be a stabiliser."*
- *"A community that explains itself to others."*
- *"If people don't like living here - move! They are not forced to stay"*

Aigas Associates

Whilst the consultation offers a representative picture of needs analysis it did also suggest that this process needed to be continuous to engage more fully with all community members on a regular basis.



How was the plan created?

Quantitative data was assessed using existing statistics from the 2001/2011 census, electoral roll, 2016 Community Needs Survey and 2018 postal Household Survey* plus local knowledge.

Qualitative data was collected through face to face meetings, open meetings, emails, phone calls and opinions posted on the online hub and community padlet.

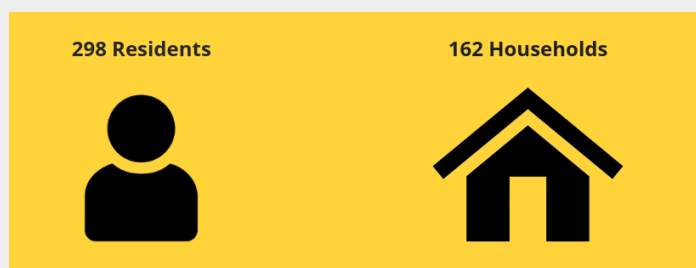
**Quantitative data for the 2018 household survey was collected by a numbered postal questionnaire which did not identify individuals but did give a locational data point. The primary reasons for this were to provide another viewpoint, or a chance for people to comment at a distance. It should also be noted that the following ethical considerations were taken into account when considering a numbered postal questionnaire versus face to face questionnaires:*

- *Participant responses may be affected by 'interviewer bias'; and*
- *Participants may have concerns about privacy and anonymity when answering questions face to face and be less likely to give honest answers to sensitive questions.*

What does our community look like?

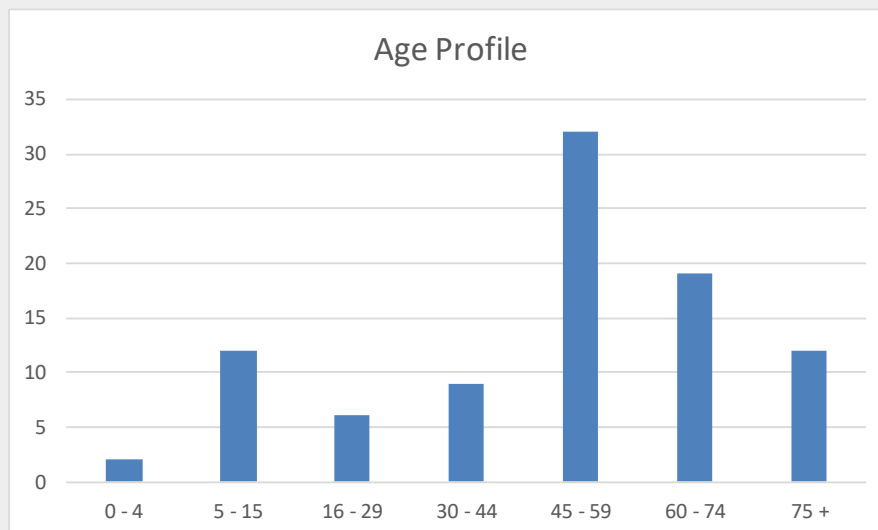
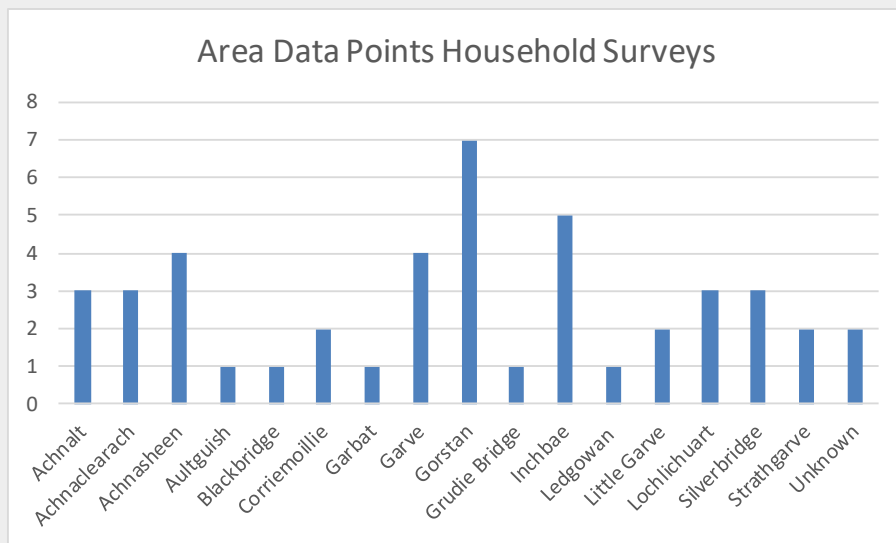
TGDDC community represents an area of some 611.1 square kms. It lays approximately half way between Inverness and the Isle of Skye and is the fourth biggest Community Council area within the Local Authority's (Highland Council). The latest population figures available from the Highland Council, dated April 2011, show a total population of 329. This means a population density of 0.5 persons per square km.

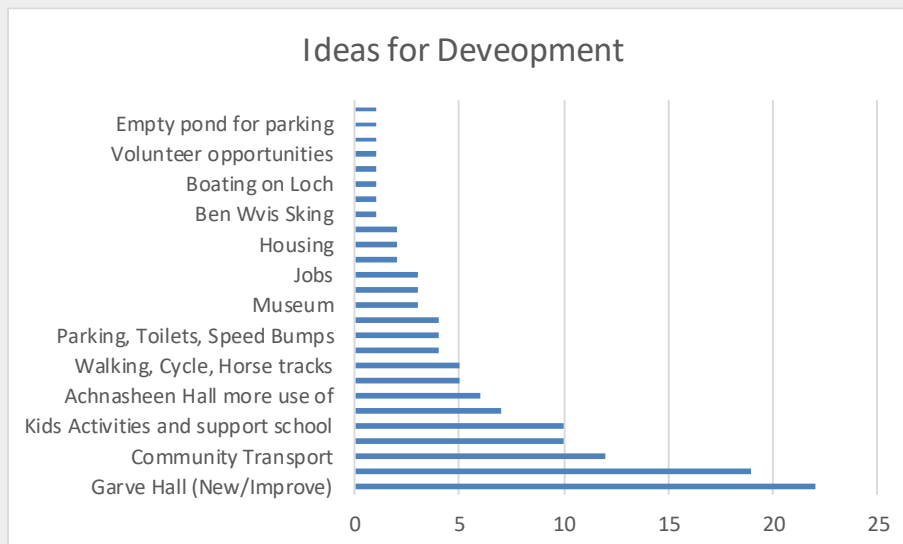
Today, our local knowledge suggests that we have 263 adults of voting age detailed on the last electoral roll as at 2018, 35 children (some are due to leave the area) in approximately 162 properties.



What did our 2018 Household Survey tell us?

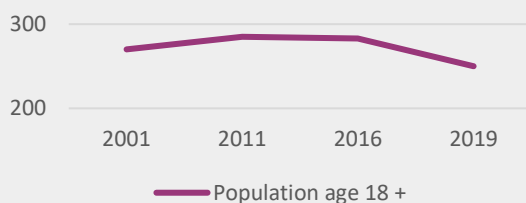
During December 2018, TGDDC decided to send out information to 174 properties in the area, we now know that of the 174 properties 162 are currently occupied. The main aims of information sent out were to attract residents over the age of 60 to sign up for a new free digital awareness training project and the decision to send out information at this point was purely based on funding targets. We also sent out membership forms and a small Household Survey which we hoped would provide some demographic information in relation to the age range of our community whilst seeking views on community development. From a total of 162 occupied households, 45 surveys were returned and provided the following information:-



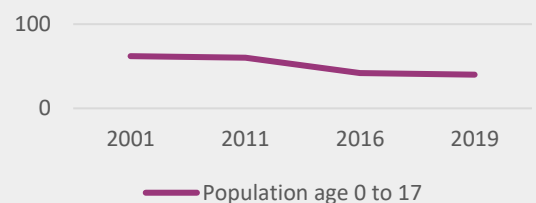


Residents were asked to provide up to 5 priorities for development, some provided more and some less.

Garve and District Adult Population



Garve and District Child Population



General trends within the adult population suggest a decline. This data has been drawn from the Census for Garve and District (2001 and 2011), the current electoral roll and the 2016 Community Survey. Trends for child population suggest less of a decline and current Highland Council predictions for the Strathgarve School roll (November 2018) note the population to maintain and increase slightly over time to 2024.

Engagement

Community Engagement and Development Officers were tasked with developing the plan. Staff and Directors of the company have received feedback regarding the future of Garve and District by engaging the community in different ways:-

On-line Hub

Garve.org has been developed as the community's on-line hub with a top priority being to connect all the disparate communities in the area. The benefits of having the online hub were appeared in a new post back in June 2018:-

"Hello and welcome to your new website, the place to discover news about your area, comment on local activities and contribute to the community.

1. **Communication** – first and foremost, we want to be able to reach out to everyone in the community, seek opinion, offer help and share success.
2. **Promoting local groups and activities** – groups are great for all sorts of social and economic reasons, and we're keen to shine a bright light on them. We know that many already exist in the area, but we would like more. In the next phase of the website development, we will be promoting groups through the website, each with a dedicated mini-website run by the group itself.*
3. **Sharing ideas** – got a bright idea for improving the area? We've got the money and (more importantly) we've got the expertise in getting new projects up and running with our two development officers. Through the online hub, you'll be able to submit your ideas and we will put them to the public vote.
4. **Celebrating our area** – we have got lots to shout about in Garve & District so we're going to hoot and holler, nice and loud... via our website. Do you have a passion for something special in your area? Let us know so we can make some noise on your behalf."

The online hub is gaining momentum as more people sign up to find out about local news and events and to share their views with the community. Phase 2 of the hub will:-

- Set up, arrange and maintain member groups.*
- Access a bespoke business directory for the GDCC area and contact businesses directly from it.
- Access to a bespoke listing of non-business services essential to the community. This will contain information and / or links to information about the following, all in one accessible place on-line.
- Register for membership in an easier and quicker way.

In addition, we will add some other useful features:

- New online subscription options allowing people to get news updates at a frequency to suit them, making the hub more relevant to their own needs.
- An events page showing in one place all the events by all groups in the community, in one place.
- Redesigning the front page to include all the features in Phase 2 .

* Garve and District Community Council and Lochlichurt Community Trust have taken the decision to retain their own websites. Reciprocal links between all three community organisations are in place. Of note, GDCC are also happy to link to any new community group web pages once up and running.

Meetings, Group and One to One Discussions, Emails and Phone Calls

<ul style="list-style-type: none"> • MEET AND GREET GARVE VILLAGE HALL X 2 	<ul style="list-style-type: none"> • GARVE CHRISTMAS LIGHTS SWITCH-ON (INFORMAL NETWORKING)
<ul style="list-style-type: none"> • MEET AND GREET LOCHLUICHART VESTRY 	<ul style="list-style-type: none"> • CORRESPONDENCE WITH GARVE VILLAGE HALL TRUSTEE REPRESENTATIVES
<ul style="list-style-type: none"> • MEET AND GREET ACHNASHEEN VILLAGE HALL 	<ul style="list-style-type: none"> • IDEAS FROM THE COMMUNITY VIA GARVE.ORG
<ul style="list-style-type: none"> • EMAIL TO GARVE.ORG MEMBERS X 2 	<ul style="list-style-type: none"> • CHRISTMAS PARTY MEETINGS
<ul style="list-style-type: none"> • LCT PUBLIC MEETING AND AGM ATTENDANCE 	<ul style="list-style-type: none"> • DIGIHUB CHRISTMAS MAILSHOT
<ul style="list-style-type: none"> • GARVE AND DISTRICT COMMUNITY COUNCIL MEETING ATTENDANCE 	<ul style="list-style-type: none"> • FRIENDS OF WAR MEMORIAL MEETING
<ul style="list-style-type: none"> • MEETING WITH EDF 	<ul style="list-style-type: none"> • DIGIHUB ONE TO ONE SESSIONS
<ul style="list-style-type: none"> • COMMUNITY PADLET 	<ul style="list-style-type: none"> • GARVE DIGIHUB LUNCH
<ul style="list-style-type: none"> • TGDDC AGM 	<ul style="list-style-type: none"> • STAKEHOLDER MEETING
<ul style="list-style-type: none"> • JOINT MEETING OF LCT AND TGDDC 	<ul style="list-style-type: none"> • ONE TO ONE CHAT WITH COMMUNITY MEMBERS
<ul style="list-style-type: none"> • JOINT MEETING – TGDDC, GDCC, LCT 	<ul style="list-style-type: none"> • EMAILS FROM INDIVIDUAL MEMBERS OF THE COMMUNITY REGARDING VARIOUS ISSUES
<ul style="list-style-type: none"> • PHONE CALLS TAKEN FROM COMMUNITY RESIDENTS 	

Community Padlet

Our Community Padlet proved popular and provided a different option for interacting with the company. Based on the concept of “post it notes”, members of the community could leave comments, post pictures, upload video clips and leave voice messages. Messages the community posted are detailed on the following 4 pages.

Community Padlet: What will Garve & District look like in the next 5 – 10 years – you decide!

I WOULD REALLY APPRECIATE TRANSPORT TO AND FROM EDEN COURT THEATRE . STRATHPEFFER I CAN COPE WITH AT PRESENT BUT WHO KNOWS WHEN THE CATARACTS ETC. WILL PREVENT SAFE DRIVING...?

*

Wild Beauty and Good People

I think what you, and others are doing in the area is marvellous! To take time, to make the area , with it's scattered houses etc more sort of "connected" is great. It is great to know that some people , who may find life rather lonely, may get to know others through your efforts, well done! Regarding the area in the future I do hope it retains it's wild beauty and the good people that you all are.

Achnasheen community like accordion, fiddle and Gaelic song....why not invite the Feis Ceilidh trail for an informal performance?



Ceilidh Trail - Fàis Rois
Taking place from 15th July to 17th Aug...
fàis rois

Flower Displays Like Beauy



Socials Sparkle

I have a vision of a programme of social events happening in Achnashseen / Garve / Inchbae, with a number of events per year, for locals and tourists. To put some sparkle back into our communities and give us a great way to get together and have fun. Surely this is what life is about.

GARVE Hall

The hall needs upgraded. Then use the new Hall as a centre point for all activities. Should have been done when LCT money first came through but as usual certain people won't allow it .

Achnasheen buzzing

Achnasheen has lost it's jewellery workshop and café, and its post-office. There is nowhere now for the community to meet informally to chat, and we have lost tourists stopping for refreshments in this prime NC500 location. My vision is for a re-enlivened Achnasheen village with a refurbished café / hub for locals and tourists alike.

I would like to hear what the under 18's want.

They are the future.

Support in own homes

We have an aging population living in the community and the community needs to support people living in their own homes for as long as possible. We need packages of services for older people that allow them to do this.

My Future Vision

I would like to see a new Hall, more community groups available for all age groups. Help towards energy costs and lastly more support towards the primary school to help reach it's full potential.

Toddler Group in a refurbished village hall



Garve having a new village hall with a cafe and farm shop within. Promotion of the train line & better bus services encouraging the tourists and bettering the community spirit.

Something for Kids

Personally I'd love to see some activities for children school age and preschool, maybe something on a Saturday morning once a month or more frequently if it attracted enough attention and there was a need for it.

Refurbished or New Village Hall



Electric Bikes



Shop

A little shop would be nice nothing big and fancy just somewhere to buy milk and any essentials.

Community Garden



Outdoors

The walk to silver bridge is a bonus to Garve, maybe on the walk, nature wooden plaques for kids to try and find say blueberry bush, a squirrel or red kite, just interesting things to get more kids into nature and off their iPads.

A cycle track get bikes off the road. Promote the Kyle of Lochalsh train more from Garve.

Garve is so lucky to have the river and waterfalls promote them more

5 - 10 Year vision:

We'll all be paying less for fuel (energy) than we are today 📉

We'll have scored up more 'first community to have ...' (to join our achievement on FTTP) 👍

We'll be looking forward to adding autonomous (self driving) taxis to the communities fleet of electric pool vehicles 🚗

I'll be looking forward to winning at least one frame of pool, following a great bar meal with Blair in the new community hub! 🏆🍷

Extend Village Hall

Since we are on route NC500 there could be more the village could offer, Out of the Blue catering does really well and it would be good if it was made into more of a coffee stop but somewhere you could sit inside and enjoy soup/bacon roll etc, maybe to extend the village hall from the kitchen end and have a coffee shop and gift shop, selling the local paper, milk etc for the community.

Activities for pre school children

Extend Village Hall

Since we are on route NC500 there could be more the village could offer, Out of the Blue catering does really well and it would be good if it was made into more of a coffee stop but somewhere you could sit inside and enjoy soup/bacon roll etc, maybe to extend the village hall from the kitchen end and have a coffee shop and gift shop, selling the local paper, milk etc for the community.

Activities for pre school children

Hall and Toilets

I feel the Hall needs renovating, the toilets could be updated to make it more like the House of Bruar toilets and a donation could be left to keep these facilities looking good and welcoming as it's the only toilets apart from Tarvie and silver bridge until you get to Ullapool.

Hall and Toilets

I feel the Hall needs renovating, the toilets could be updated to make it more like the House of Bruar toilets and a donation could be left to keep these facilities looking good and welcoming as it's the only toilets apart from Tarvie and silver bridge until you get to Ullapool.

Community Venue

A multi purpose venue which could encompass a cafe/bar/restaurant, shop, film screenings and daily activities, sports, youth club etc. Maybe it could be run as a social enterprise.

Hall and Community Garden

My top priority would be to have a modern and comfortable village hall with Wi-fi and ideally an outdoor space for a community garden. This would be multifunctional:

- Able to accommodate community events such as live music nights and cinema nights.
- Availability of smaller rooms for special interest groups (book club, games society, craft classes etc).
- Cater for tourists. Examples - Inclusion of a cafe serving sandwiches, cakes, coffee. The cafe would be a bonus for locals too! Selling of tourist souvenirs, information service showing local walks and detailing history of Garve. Income from the cafe would hopefully allow the hall to be self sufficient in terms of running costs.
- Wifi access would be a great facility for those residents who cannot get online at home and for tourists passing through.
- A community garden that provides growing space / glass house for a gardening club and pleasant outdoor seating. Could also include a barbecue hut which would be great to hire out for parties. A pizza oven would be a great way to use the produce from the community garden!

Community Bus Service

A community bus service to make it easier for community get together. These could be events at the village hall, or indeed could be used to transport residents to events at other locations, say Eden Court or Strathpeffer Pavilion. The online digihub could be used to propose and vote for social outings and costs for transport / tickets sought from LCT.

Community Bus Service

A community bus service to make it easier for community get together. These could be events at the village hall, or indeed could be used to transport residents to events at other locations, say Eden Court or Strathpeffer Pavilion. The online digihub could be used to propose and vote for social outings and costs for transport / tickets sought from LCT.

Footpaths and Healthy Lifestyle

Improve the network of footpaths around the area. There are existing paths that have become overgrown with gorse and bracken and so need some maintenance. It would be great if our area could champion healthy living through a decent network of footpaths to suit all abilities. Having access to LCT funds may allow organisations such as John Muir Trust, Rambles Association to get involved and be a way of advertising the beauty of our area.

Water Supplies

My future vision for this area is for Scottish Water to enable the approx. 72 odd properties with a private water supply to connect to a public water supply.

Music Festival in the Hall



ELPHIN MUSIC FESTIVAL

SAT 17TH JUNE 2017
ELPHIN COMMUNITY HALL
DOORS 6PM TILL 11PM
Bar and Complimentary Food
music from
DAVY COWAN AND SAM
+ SPECIAL GUEST CEILIDH BAND



In the future I foresee Garve with a thriving Community Hub, where we can meet for coffee and wander around our community garden. On Friday nights we have the pool competition in the local bar, after we've had a delicious bar meal!

In 5 years time...

We'll have a fabulous community hub we can be proud of, somewhere we can have a good meal and some real ale, attracting local producers to sell their wares. We will have the odd quiz night (whatever happened to those?!). We can use the space to benefit all - over 50's keep fit, yoga and stretching classes, a small gym (like Strathpeffer have), maybe a cinema night. The space would have great potential - craft classes, gaelic classes etc etc. In 10 years time we'll look back and think why we didn't have the hub sooner! We'll have a community where people want to live and where they feel part of something, oh and we'll have a mature community garden which has enthused our young people to look after the environment. I'll know my neighbours better than I do now.

Community Transport



It is really difficult to try and visualize what the community might look like in 5 years time!

Obviously investing community benefit funds back into the community is the main focus of the Development Company, but as Blair's comment shows it doesn't have to be all about spending money! Winning a frame of pool could be quite ambitious if you are as talented as I am at pool.

Not sure about meeting an autonomous taxi on the Hazelbrae bend either, but it is only 12 years until new petrol/ diesel cars will be disappearing so that should be something we start thinking about soon.

And views on how best to consult with the community would be welcome too.



Museum for Garve and District

Working with Friends of the War Memorial make a museum that begins a journey and ends with a nice walk to a redeveloped war memorial site.

Virtual Tour



Cafe in Village hall



The cafe in the Upper Eskdale Development Group hub at Eskdalemuir, in the Southern Uplands

Tennis Court



Swimming Pool





What did we find out?

From talking to our community, we have found out that overall priorities remain similar to those of the 2016.



New Strategic Themes

1. Community Ownership

There are three buildings currently used by the community - Achnasheen Village Hall, Lochluichart Vestry and Garve Village Hall. Our community have put forward the following ideas:-

- Renovated/Repurposed/New Community Halls for Garve and Achnasheen – Community Hubs
*Ideas for use – local shop, café, craft outlets, museum, office space, activity/research centre, gateways to Northern Highlands.**

* It should be noted that the idea of a community café could also be a standalone project in terms of income generation for Garve and Achnasheen and as such has been added to the potential list for community owned assets.

We currently have 3 community assets – Garve Village Hall, Garve and District War Memorial and Wyvis Natural Play Park.

Community consultation has identified areas where there is potential for community owned assets:-

- Purchase a local woodland/forest.
- Small renewable energy schemes to provide long term community income.
- Purchase of land near war memorial site from the Forestry Commission.
- Develop and enhance the footpath network.
- Community garden.
- Development of a small light industrial area for business units.
- Housing with workspace.
- Develop a Campervan Site – Achnasheen
- Develop former hotel land – Achnasheen
- Garve Hotel and surrounding land
- Community Cafe

2. Community Energy

Consulting with the community:

Community Energy Scotland was commissioned to identify opportunities and provide support to the Energy Group to continue research and consultation on renewable energy and home energy efficiency in our community. As a result of their initial work, some significant points relating to our community emerged:

- On average, homes in Garve and District use 24% more energy than the UK average
- Most people heat their home using oil and electricity, which can be more expensive and polluting than renewables
- 80% of homes have a log burning stove
- We estimate that the whole community spends around £263,000 per year on energy and emits over 1000 tonnes of carbon.
- At the moment nearly all of this money flows out of the community, but this could change if we develop and invest in our own energy saving and generation projects.

Based on this information, the Energy Group was set up - to look at ways of reducing energy costs to householders in our area, to help householders improve home energy efficiency, to develop a plan for long term community income from local renewable energy projects, and to identify and develop initiatives that contribute to carbon reduction and improve sustainability in the community.

Continuing Consultation – the energy group has gathered more information from the community, through simple survey questions distributed to every house by post along with the energy grant application. The responses received have been good (90 households in 2017 and 109 households in 2018).

Outputs

28 households signed up for the first round of “Home Energy Visits” where free, expert advice is provided by Home Energy Scotland. This advice is tailored to individual households and results in a comprehensive report for the householder and also access to help on obtaining further grants or financial assistance from

non-LCT funds. A further 13 home visits have been arranged for 2019, and we have continued to offer this referral service for anyone interested in a Home Energy Visit. Some houses have been successful in getting funding for improvements.

Setting up an Energy Grant Scheme – with support and advice from other Communities and the LCT, the Energy Group has re-incarnated the initial rebate scheme offered by the Lochluichart Windfarm Extension. Applications are invited from residential households in our area for an annual grant of £250 paid in Dec. Uptake has risen from 123 households in 2017, to 138 in 2018. Value of savings on energy costs has been a total of £65,500 over the two years, (£31,000 and £34,500) which has been funded from locally wind-generated electricity via LCT.

LED Light Bulbs – a simple way of helping households to benefit from improved energy efficiency but popular! 124 households applied and over 940 free light bulbs were distributed. LED bulbs were chosen as offering bright light, low energy consumption, and longer bulb life.

Oil Buying Club – thanks to the information gathered from our “optional questions” survey, interested members of the community are now looking at getting an Oil Buying Club established

Long Term Large Scale Projects – Community Renewable Generation; Community Woodland/ Woodfuel

Both of these ideas have had significant support from the community, with 95 households supporting continued exploration of viable opportunities for community owned generation projects in our Dec 2018 questionnaire, and 53 households supporting a Community Woodfuel Scheme in 2017. Feasibility work on community renewable generation identified potential, as well as constraints, for both hydro and woodfuel schemes. By building on the feasibility work already undertaken, taking into consideration the changing picture around renewables and the continued interest shown from the community, the Energy Group aims to engage with the community to further look at the options, while recognising that this will involve much careful planning work.

3. Utilities

Broadband Group

The Broadband Project is due to complete during 2019. During Phase 1 all 123 non-remote properties outside of Garve, Strathgarve and Garve to Gorstan were completed and can now order an FTTP service.

Phase 2 work has begun for 9 remote properties. FTTP network contracts for Luib and Strathvaich (5 properties in all) have started and should be complete by the third quarter of 2019. A funding application has been made to LCT for a subsidised satellite solution for Fannich and Badavanich (3 properties) and if approved can be in place during the second quarter of 2019.

No broadband solution was required for Aultdearg (1 property).

Phase 3 will support Strathgarve and Gorstan to Garve. A funding application has been made to LCT to install FTTP to 16 properties. If approved work will be complete by end 2019.

Phase 4 will support Garve village. BT are now connecting all remaining properties in the village to the fibre cabinet. Due for completion during second quarter of 2019.

This will mean that by end 2019, all 200 properties and everyone in the GDCC community, except the 3 satellite users, will have access to a broadband service of over 50Mbps with unlimited data.

Private Water Supplies

Some residents with private water supplies have requested support with accessing mains water. We accept that this project would have to be fully researched in terms of need, demand, cost and sustainability but wanted to ensure their views are represented as part of the plan.

4. Community Care

The community have put forward the following ideas:-

- Community Transport
- Handyman Service (possible link to Men's Shed)
- Support at Home, possible Personal Assistant Service

Our community say care of the elderly and most vulnerable is important and ideas reflect this.

There are many good examples of community transport, if a feasible option for Garve and District all opportunities should be considered including those with provision for electric vehicles.

There is currently a Handyman Service provided by the Highland Council, but this may be a business opportunity for someone locally to develop or link to a Men's Shed. Although some transport is available throughout Garve and District, community transport remains high on the list of priorities.

5. Community Groups & Events

There are some established groups within the area. For example, Coffee and Books, Achnasheen and Strathvaich Gun Club and NOSAS Archaeology Group. There is scope for further provision and the following ideas were put forward:-

DigiHub Project	Health and Wellbeing
DigiHub Meet and Eat Project	Horse Riding
Photography	Pre-School Play Group
Painting	After School Club
Fishing	Youth Club
Walking	Men's/Women's Shed
Running	Tree Planting
Cycling	Teaching Craft Skills
Historical Society, An Comunn Eachdraidh Gairbh	Children's Activities Yoga

6. Business and Tourism

Garve and District has potential for year-round business and seasonal services offering tourist accommodation and activity. As the gateway to the NC500 Garve and District is a popular stop off for cyclists on the first leg of the route as well as day trippers heading to the North and West. The following ideas have been put forward:-

- Dedicated portal page for tourist accommodation and service providers.
- Business and accommodation directory.
- Small business units to let.
- Food tourism in line with Government initiative – Food Tourism Scotland.

- A handyman service for the elderly.
- A shop in Garve.
- A village hall or hub that provides hot food as well as basic grocery items for sale.
- Development of a Campervan site – Achnasheen.
- Develop old studio/café – Achnasheen.
- Possible redevelopment of former hotel land at Achnasheen.
- Provision of a home support service for those that need it (Personal Assistant).
- Community Cafe

The district is served well by its railway line and there is potential to promote the area to visitors in terms of the munros: Fannichs, Ben Dearg, Ben Wyvis and Fionn Bheinn as well as more gentle forest paths and hill walks. There are a number of established B&B providers as well as four hotels and various self-catering properties.

There are a number of self-employed tradespeople in the area and a stated demand for business units for rent indicates that there should be thought given for a small dedicated light industrial area within the district that could be rented by sole traders/smaller businesses.

What don't we know?

We are struggling to talk to our young people, school aged pupils within our community and this is an area we are going to concentrate on as part of the new Company work programme. Their views will be adequately reflected in all we do moving forward.

What next?

New Strategic Themes

TGDDC aim to develop the following strategic themes which are a clear fit with company vision, mission and objectives. Themes are numbered in priority order as per the 2016 Community Vision taking into consideration all community consultation to date. However, it must be noted that projects from different strategic themes may run at the same time.

Community Ownership



Community Energy



Utilities



Community Care



Community Groups & Events



Business & Tourism




2016 and 2019 Vision


Community Ownership	
<p>Aim: Strengthen our community and build capacity by:-</p> <ol style="list-style-type: none"> 1. Renovate or repurpose community buildings; and 2. Utilising rights under the Community Empowerment Act and Community Right to Buy legislation. 	
<p>Objective: Commission necessary research to investigate options/define solutions for the creation of a new community asset portfolio.</p>	
<p>Potential Outcomes:</p> <ul style="list-style-type: none"> • 2019 Community Priorities 	

Fit with 2016 Community Survey	Fit with 2016 Community Vision	2019 Community Priorities
<p>New Community Hub/Hall</p> <p>Improvement to existing village hall e.g. insulation, new windows, heating and services</p> <p>Footpath network</p> <p>Environmental Projects</p>	<p>A community that cares for its elderly residents.</p> <p>A community which has a country feeling and isn't just a stopping off place for visitors to the West.</p> <p>A community which celebrates its history</p> <p>A community which has a balanced demographic of young, working age and older residents.</p> <p>A community which has invested in its future with legacy projects providing a</p>	<p>Renovated/Repurposed/New Community Halls for Garve and Achnasheen – Community Hubs considering inclusion of some of the ideas below if appropriate:-</p> <p>Ideas for new community assets:-</p> <p>Purchase a local woodland/forest.</p> <p>Small renewable energy schemes to provide long term community income.</p> <p>Purchase of land near war memorial site from the Forestry Commission.</p> <p>Develop and enhance the footpath network.</p> <p>Community garden.</p> <p>Development of a small light industrial area for business units.</p> <p>Housing with workspace.</p> <p>Develop a Campervan Site – Achnasheen</p>

	<p>sustainable future for generations to come.</p> <p>A community which has vibrant social activities.</p> <p>A community that makes the most of its landscape and environment.</p> <p>A community where people have the opportunity to both live and work.</p>	<p>Develop former hotel land – Achnasheen Garve Hotel and surrounding land Museum Men’s Shed Shop Office space Community owned cafe</p> <p>Link to other 2019 themes: 2. Community Energy 4. Community Care 5. Community Groups & Events 6. Business and Tourism</p>
--	---	--

Community Energy	
Aim: Sustainable energy for the community.	
Objective: Work with the community and commission required resources to investigate options/define solutions to achieve outcomes.	
Potential Outcomes: <ul style="list-style-type: none"> • Reduced energy costs to households. • Improve home energy efficiency. • Local renewable energy projects. • Reduce carbon for a sustainable community. 	

Fit with 2016 Community Survey	Fit with 2016 Community Vision	2019 Community Priorities
<p>Reduced energy costs for households</p> <p>Environmental Projects</p>	<p>A community that cares for its elderly residents</p> <p>A community which has a balanced demographic of young, working age and older residents</p> <p>A community which has invested in its future with legacy projects providing a sustainable future for generations to come</p> <p>A community where people have the opportunity to both live and work</p>	<p>Energy Grant Scheme</p> <p>LED Lightbulbs</p> <p>Oil Buying Club</p> <p>Community Renewable Regeneration – Community Woodland/Woodfuel</p> <p>Link to other 2019 themes:</p> <p>1. Community Ownership</p> <p>4. Community Care</p> <p>5. Community Groups & Events</p> <p>6. Business and Tourism</p>

Utilities	
Aim: To ensure Garve and District has adequate infrastructure to support its residents.	
Objectives: 1. Improve broadband throughout Garve and District. 2. Improve water supply to residents with private supply if feasible.	
Outcome: <ul style="list-style-type: none"> Broadband Group completes all phases of work. Potential Outcome: <ul style="list-style-type: none"> Residents with private water supply will be consulted with regard to available options in terms of mains water provision. 	

Fit with 2016 Community Survey	Fit with 2016 Community Vision	2019 Community Priorities
<p>Improved broadband (reliable, fast affordable)</p> <p>Improve private water supplies</p>	<p>A community that cares for its elderly residents</p> <p>A community which has a balanced demographic of young, working age and older residents</p> <p>A community which has invested in its future with legacy projects providing a sustainable future for generations to come</p> <p>A community where people have the opportunity to both live and work</p>	<p>Broadband Group to complete current project.</p> <p>Assess needs and costs associated with private water supplies.</p> <p>Link to other 2019 themes: 1. Community Ownership 4. Community Care 6. Business and Tourism</p>

Community Care



Aim: A community that cares for all residents especially its elderly and most vulnerable.

Objective: Given adequate need and demand in line with cost analysis/sustainability – develop new services in line with 2019 Community Priorities.

Potential Outcomes:

- **Community Transport**
- **Handyman Service**
- **Support at home – Personal Assistants**

Fit with 2016 Community Survey	Fit with 2016 Community Vision	2019 Community Priorities
<p>Community care/care at home scheme for the elderly</p> <p>Community transport scheme e.g. minibus</p> <p>Handy man service for the elderly</p>	<p>A community that cares for its elderly residents</p> <p>A community where people have the opportunity to both live and work</p>	<p>Community Transport</p> <p>Handyman Service, possible link to Men’s Shed</p> <p>Support at Home, possible Personal Assistant Service</p> <p>Link to other 2019 themes: 1. Community Ownership 6. Business and Tourism</p>

Community Groups & Events

5.

Aim: A community with active and sustainable community groups providing volunteer opportunities and a range of social events for all.

Objective: New community groups and events, run by the community.

Potential Outcomes:

- Develop a database of existing groups and offer support if required to promote up-skilling and continued self-management.
- Encourage new groups to form and develop processes to support them to the point of self-management.
- Encourage groups to develop volunteer opportunities and provide support in terms of associated policies and procedures.

Fit with 2016 Community Survey	Fit with 2016 Community Vision	2019 Community Priorities	
<p>Christmas party for the whole community (children and adults)</p> <p>More community activities/clubs e.g. photography, painting, fishing.</p>	<p>A community that cares for its elderly residents</p> <p>A community which has a country feeling and isn't just a stopping off place for visitors to the West</p> <p>A community which celebrates its history</p> <p>A community which has vibrant social activities</p> <p>A community that makes the most of its landscape and environment</p>	<p>Photography</p> <p>Painting</p> <p>Fishing</p> <p>Walking</p> <p>Running</p> <p>Cycling</p> <p>Health and well-being</p> <p>Horse Riding</p> <p>Pre-School Play Group</p> <p>After School Club</p> <p>Youth Club</p> <p>Men's Shed</p>	<p>Tree Planting</p> <p>Historical Society, An Comunn Eachdraidh Gairbh</p> <p>Young and Old coming together</p> <p>All Ages Coffee Morning</p> <p>Teaching Craft Skills</p> <p>Community Garden</p> <p>DigiHub Meet and Eat Projects</p> <p>Children's Activities</p> <p>Yoga</p>
		<p>Link to other 2019 themes:</p> <p>1. Community Ownership</p> <p>4. Community Care</p> <p>6. Business and Tourism</p>	

Business & Tourism



Aim: Business - people have new business opportunities and flexible options to work.

Objective: Develop new business opportunities, taking account of need for flexible working environments.

Aim: Tourism - we aim to make the most of our stunning landscape and natural heritage.

Objective: Promote Garve and District as a tourist destination.

Potential Outcomes:-

- **See 2019 Community Priorities Below**

Fit with 2016 Community Survey	Fit with 2016 Community Vision	2019 Community Priorities
<p>New Community Hub/Hall</p> <p>Improvement to existing village hall e.g. insulation, new windows</p> <p>A shop in Garve</p> <p>Community care/care at home scheme for the elderly</p> <p>Community transport scheme e.g. minibus</p> <p>Handy man service for the elderly</p>	<p>A community which has invested in its future with legacy projects providing a sustainable future for generations to come</p> <p>A community that makes the most of its landscape and environment</p> <p>A community where people have the opportunity to both live and work</p> <p>A community which has a balanced demographic of young, working age and older residents</p> <p>A community that cares for its elderly residents</p>	<p>Dedicated portal page for tourist accommodation and service providers.</p> <p>Business and accommodation directory.</p> <p>Small business units to let.</p> <p>Food tourism in line with Government initiative – Food Tourism Scotland</p> <p>A handyman service for the elderly.</p> <p>A shop in Garve.</p> <p>A village hall or hub that provides hot food as well as basic grocery items for sale.</p> <p>Development of a Campervan site – Achnasheen.</p> <p>Develop old studio/café – Achnasheen.</p> <p>Possible redevelopment of former hotel land at Achnasheen.</p> <p>Provision of a home support service for those that need it (Personal Assistant).</p> <p>Community transport</p> <p>Office space</p> <p>Garve Hotel and associated land</p> <p>Housing with workspace</p> <p>Link to other 2019 themes:</p> <p>1. Community Ownership</p> <p>2. Sustainable Energy</p> <p>3. Utilities</p> <p>4. Community Care</p> <p>5. Community Groups & Events</p>

Project Management and Project Working Groups

This section of the plan details the process for managing projects and tracking progress within each theme. Projects will be reviewed on a continuous basis and status will be recorded and reported to the community.

A full five year project schedule will be developed and used as a base-line for project monitoring and review.

■ Short Term = 1-2 years ■ Mid Term = 2-3 Years ■ Long Term = 5 Years

Project Key: The Following RAG status will be used to measure progress on projects and communicate the status of current and new projects:

Red	Project not yet started
Amber	Project started, a work in progress
Green	Project complete

The projects will be developed under the six strategic themes of this plan and a project register will be used to measure the progress of specific tasks, using the RAG status above.

Working Groups

TGDDC operates working groups under each strategic theme highlighted by the community. As a whole, these six themes combined, make TGDDC's programme of activities. Each theme may be groups of projects that fall under its umbrella. The Community Engagement and Development Officer will help to support and coordinate the groups and may also lead groups as required. Working groups at the TGDDC are also open to the community and we encourage people with specialist skills from out-with the Company to offer support, expertise or volunteer help on specific projects which they may be interested in.

Projects Update March 2019

Theme	Project	RAG Status
Community Ownership	Renovated Garve Village Hall	Resource Efficiency Scotland Report Complete
	Renovated Garve Village Hall/New Community Hub/Community Garden A shop in Garve. A village hall or hub that provides hot food as well as basic grocery items for sale. Office space. Garve Hotel and associated land.	Research Tender Issued
	War Memorial Development	Discussions with Forestry Commission
Community Energy	Energy Grants LED Lightbulbs Oil Buying Club	All On-going
Utilities	Broadband Group	Phase 1 Complete
		Phase 2
		Phase 3
Community Groups/Events	Develop a database of existing groups and offer support if required to promote up-skilling and continued self-management.	On-going
	Encourage new groups to form and develop processes to support them to the point of self-management.	On-going
	*Wholly arranged by G&D Christmas Party Group – support for LCT funding application provided by TGDDC **Wholly arranged by Achnasheen Amenities Group	G&D Christmas Party* Achnasheen Christmas Party**
		Children's Activities – Drama Workshop SEAR Reptile Visit
		3 rd Children's Activity Easter 2019
		DigiHub Meet & Eat Projects up and running
		Phase 2 of online hub
Business & Tourism	Dedicated portal page for tourist accommodation and service providers.	Phase 2 of online hub

New Projects

How do we now move the plan forward?

To achieve the aims and objectives identified, new projects will be selected to be delivered in line with the core strategic themes agreed by the community. Projects will be chosen using the following criteria:

- Analysis of need and demand as opposed to want.
- Identification of community outputs and outcomes per project.
- Timescale sensitive.
- Balanced development across the 6 strategic themes.
- Cost of potential delivery.
- Sustainability
- Company capacity to take projects forward.

Balance is important across the strategic themes and we realise that large projects take a long time to deliver, it is therefore our intention to ensure we have some smaller projects running concurrently. When work begins on any new projects this will be publicised on the community's online hub in the form of an annual work programme.



Conclusion

The information contained within our Community Development Plan represents a summary of community input to date. New strategic themes, aims, objectives and priorities are based on a community engagement process which is continuous and as such this plan will be reviewed annually by the Directors of the Company.



Strategic planning for project work is important to ensure that funds are assigned to projects that have their own distinct priorities. Six key themes have been identified and these will continue to form the basis for project work within the remit of the TGDDC.

Community Benefit Funds from local renewable energy projects will be a resource that can be used to promote growth and development within Garve and District. This cannot be a standalone support and local Community Engagement and Development Officers will continue to be employed to engage with community members, stakeholders and other funding sources within the area to develop and create work streams that will improve well-being, build resilience and improve the economic prosperity of the area.